

Sonata

DOMENICO SCARLATTI

K.1 L.366

Allegro

Measures 1-2 of the Sonata. The music is in G minor, 2/4 time. The right hand features a melodic line with eighth-note patterns and a trill on the final note of the first measure. The left hand provides a rhythmic accompaniment with eighth-note chords.

Measures 3-5 of the Sonata. The right hand continues the melodic line with eighth-note patterns and trills. The left hand maintains the rhythmic accompaniment with eighth-note chords.

Measures 6-7 of the Sonata. The right hand features a melodic line with eighth-note patterns and a trill. The left hand provides a rhythmic accompaniment with eighth-note chords.

Measures 8-9 of the Sonata. The right hand continues the melodic line with eighth-note patterns and trills. The left hand maintains the rhythmic accompaniment with eighth-note chords.

Measures 10-11 of the Sonata. The right hand features a melodic line with eighth-note patterns and a trill. The left hand provides a rhythmic accompaniment with eighth-note chords.

Measures 12-13 of the Sonata. The right hand continues the melodic line with eighth-note patterns and trills. The left hand maintains the rhythmic accompaniment with eighth-note chords.

Measures 14-15 of the Sonata. The right hand features a melodic line with eighth-note patterns and a trill. The left hand provides a rhythmic accompaniment with eighth-note chords.

16

Musical notation for measures 16 and 17. The system consists of a treble clef staff and a bass clef staff. The key signature has one flat (B-flat). Measure 16 features a complex rhythmic pattern with eighth and sixteenth notes in the treble and a steady eighth-note bass line. Measure 17 continues this pattern with a sharp sign (#) appearing in the treble staff.

18

Musical notation for measures 18 and 19. The system consists of a treble clef staff and a bass clef staff. Measure 18 includes a fermata over a note in the treble staff. Measure 19 continues the melodic and harmonic development.

20

Musical notation for measures 20 and 21. The system consists of a treble clef staff and a bass clef staff. Measure 20 features a sharp sign (#) in the treble staff. Measure 21 continues the piece's rhythmic and melodic flow.

22

Musical notation for measures 22 and 23. The system consists of a treble clef staff and a bass clef staff. Measure 22 includes a sharp sign (#) and a flat sign (b) in the treble staff. Measure 23 features a fermata over a note in the treble staff.

24

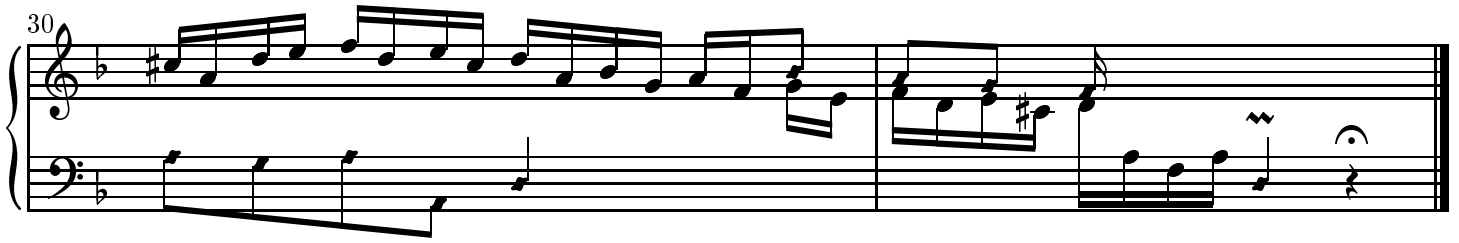
Musical notation for measures 24 and 25. The system consists of a treble clef staff and a bass clef staff. Measure 24 includes a fermata over a note in the treble staff. Measure 25 continues the melodic and harmonic development.

26

Musical notation for measures 26 and 27. The system consists of a treble clef staff and a bass clef staff. Measure 26 includes a flat sign (b) in the treble staff. Measure 27 continues the piece's rhythmic and melodic flow.

28

Musical notation for measures 28 and 29. The system consists of a treble clef staff and a bass clef staff. Measure 28 includes a sharp sign (#) in the treble staff. Measure 29 continues the melodic and harmonic development.



In bar 12 beat 2, the trilled 16th g was probably added later, as there is also a dot on the initial 8th f.

Copyright ©John Sankey 1999. Typeset by GNU LilyPond 1.2.16. Released under the GNU General Public License. You are free to copy and distribute this document as much as you wish, in any format, as long as this notice appears on each copy.